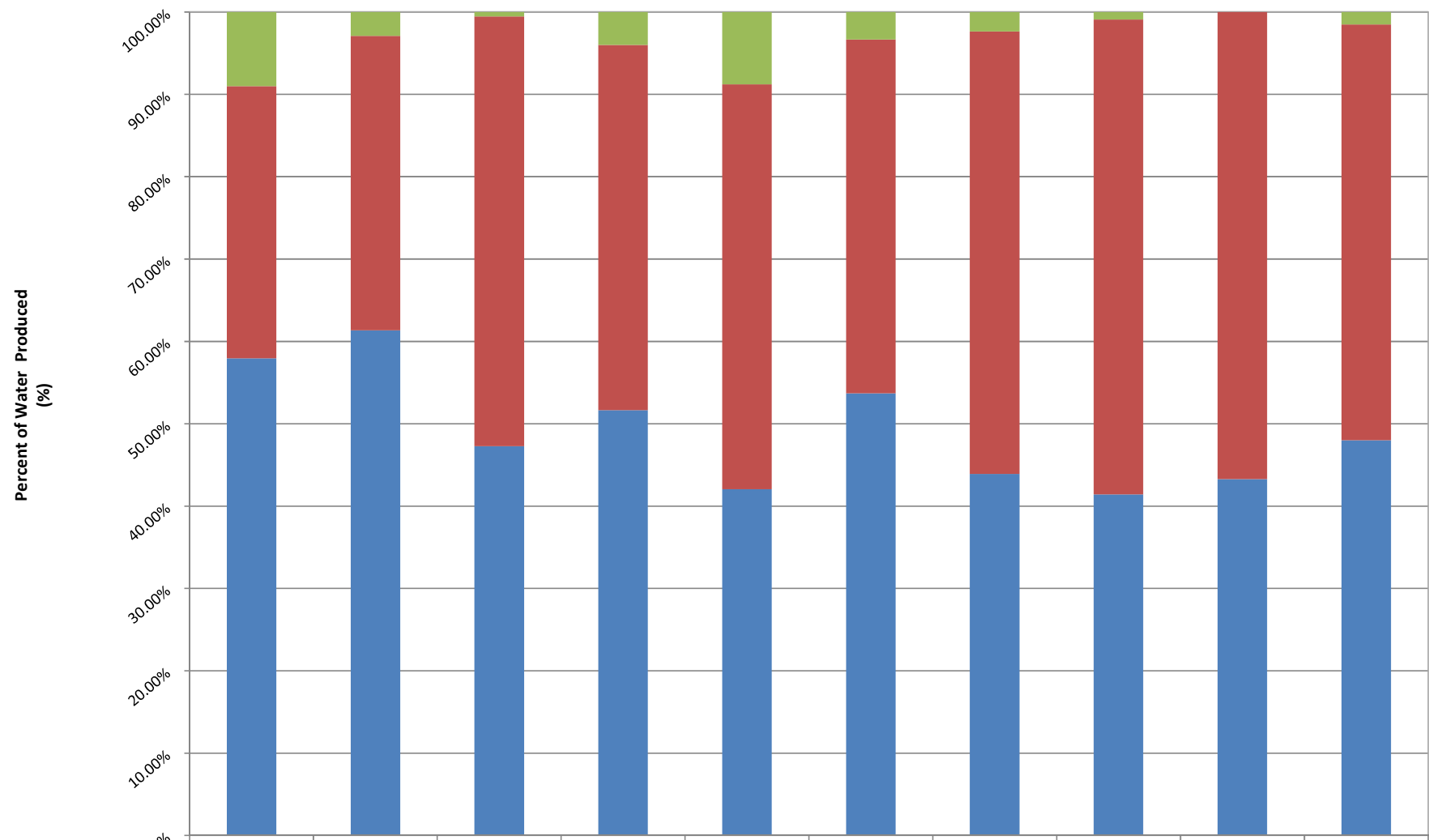


## Annual Production by Source for Last 10 Years (Percent)



■ Wells (% of total)	2008	2009	2010	2011	2012	2013	2014	2015	2016	2017 (ytd)
■ Lake Palestine WTP (% of total)	9.02%	2.90%	0.54%	4.00%	8.78%	3.32%	2.36%	0.89%	0.00%	1.51%
■ Golden Rd WTP (% of total)	33.02%	35.76%	52.19%	44.37%	49.17%	42.97%	53.75%	57.71%	56.72%	50.50%
	57.97%	61.34%	47.27%	51.64%	42.05%	53.70%	43.89%	41.40%	43.28%	48.00%